



Blessed Dominic Catholic Primary School Great Strand Colindale London NW9 5PE  
Tel: 020 8205 3790

E-mail [office@blesseddominic.barnetmail.net](mailto:office@blesseddominic.barnetmail.net)

Website [www.blesseddominicprimary.co.uk](http://www.blesseddominicprimary.co.uk)

## **Friday 29th September 2023**

Dear Parent/Carer,

Every year, we are always blown away by your fantastic commitment to the 'Macmillan Cancer Support' charity and this year is no exception. We would like to say a huge thank you to everyone who supported today's MacMillan Cancer fundraiser.

It was fabulous to see the whole school community coming together to raise money for this worthy cause. Thank you to those who donated and bought cakes and to those who helped with the sale. We will let you know next week, how much money was raised.

As Part as our Harvest Celebration, we will also be holding our annual Grandparents afternoon tea towards the end of October (separate letter to follow). On that day, we have always collected food to give to the local homeless centre. However, this year, all donations will support 'Food Bank Aid', based in North London, as they are experiencing higher than usual demand. Please give generously as your donations will make a significant difference to the lives of many families in our local community.

Thank you in advance for your generosity and support and best wishes for the weekend.

Mrs Pears

---

## **The feast of St Vincent De Paul.**

***Open my eyes***

***Open my eyes that I may see the deepest needs of men, women and children***

***Move my hands that they may feed the hungry;***

***Touch my heart that it may bring warmth to the despairing;***

***Teach me the generosity that welcomes strangers;***

***Let me share my possessions with people in need;***

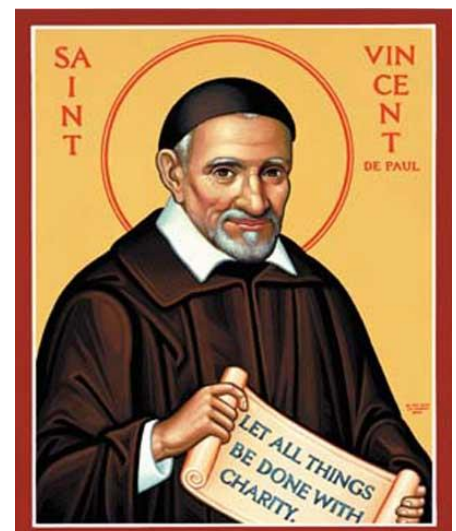
***Give me the care that strengthens the sick;***

***Help me share in the quest to set prisoners free;***

***In sharing our anxieties and our love,***

***Our poverty and our prosperity;***

***We partake of your divine presence. Amen.***





## Prospective Nursery /Reception Meeting

For September 2024

Wednesday 1<sup>st</sup> November at 5.30pm

or

Thursday 2nd November at 9.05am



### Grandparents' Afternoon Tea

Friday 20th October 2023

at 1.45pm

*(separate letter with details to come)*



### Consultation Evening

18<sup>th</sup> October Parent Consultation Meeting

5.00-8.00pm

19<sup>th</sup> October Parent Consultation Meeting

3.30-6.30pm



### Year 5 retreat to 'SPEC' April 2024

We would like to invite all **current Y5 parents** to a meeting where you can find out information about the trip and raise any questions that you may have.

The meeting will take place on

**Monday 2nd October 2023 at 3.30pm**



### Following school uniform policy

It is essential that your child wears their school tie everyday as it is part of their school uniform. Also, a reminder that your child must wear the **school PE kit on their PE day**. Other sports clothing from home is not permitted. Thank you in advance for your co-operation.

**School Uniform** is available to order and buy through our 'Parent Pay' shop

See link below

<https://app.parentpay.com/ParentPayShop/Uniform/Default.aspx?shopid=1131>

### GOVERNORS' FUND WE NEED YOUR HELP!

Thank you to everyone who has responded this term with either a termly or complete payment for the year. The Governors would like to thank you for your generosity and support. Please if you haven't done so already, make your payment on 'Parent Pay'.

Your ongoing generosity and support is greatly appreciated and means that we can continue to purchase high quality resources to support your child's learning and enable us to keep the Breakfast and After School clubs running.

## Lunches and snacks

Early Years Foundation stage and KS1 all receive a piece of fruit/vegetable as part of the government healthy eating scheme. This does not extend to KS2. Children may bring in their own fruit or vegetable for break, which should be kept separate from packed lunches. Biscuits, cakes, rice cakes are not acceptable. **Please keep packed lunches healthy.** They should not contain sweets or chocolate (A mars bar is chocolate, a Kit-Kat is a chocolate covered biscuit) and must not contain nuts of any kind as we have children with severe allergies. Please be careful with things like chocolate spreads and satay coverings, which don't look like nuts. Plenty of ideas can be found at <https://www.nhs.uk/change4life/recipes/healthierlunchboxes>



## HARVEST APPEAL 2023

### Friday 20th October 2023



This year, as part of our Harvest thanksgiving, we are asking children for a donation of non-perishable food items such as tinned soup, beans, fish, pasta, rice, cereal, tea bags and coffee to name but a few.

Your child can start bringing in their donations from **Monday 16<sup>th</sup> October** and the last day will be **Thursday 19<sup>th</sup> October**, where they'll be placed in their class food basket. Donations will go to help the 'Food Bank Aid' based in North London who are experiencing higher than usual demand.

Thank you in advance for your continual support.



### Criteria for Attendance and Punctuality –

### Updates from our Education Welfare Officer (EWO).

**In an effort to improve attendance and punctuality across the school, we will be implementing the fixed penalty notice scheme for both persistent ABSENCE and persistent LATENESS.**

This week, our Barnet Education Welfare Officer came to review our attendance. She was disappointed to see that attendance wasn't as high as it used to be pre-covid times.

There are quite a few children who have attendance below **90%**. *This figure is significantly below the national average and is considered as persistent non-attendance.* **96%** attendance is expected by the school and the Education Welfare Team for children to achieve their educational potential. Children who are unwell (e.g., sickness, vomiting or high temperature) should not come to school but children who are slightly under the weather should attend. Please be assured, that if we feel your child is ill, we will send them home.

When your child is absent for **more than three days**, we would expect all parents to substantiate with **medical evidence**. This could include:

- a stamped doctor's appointment card,
- information about the medication your child has been prescribed (a photo can be emailed to the office or brought in on return to school).

As you know, we can administer medication on site (if it is prescribed by the doctor).

The Education Welfare Team from the London Borough of Barnet regularly monitor our attendance. They may contact you if your child's attendance is significantly low (below 90%). This may be a letter or a phone call. Absences before and after school holidays will also be monitored. If there is not a sufficient reason to substantiate the absence, the Education Welfare Team will issue a fixed penalty notice.

Families should also be aware that the London Borough of Barnet will issue a fixed penalty notice to parents if children are consistently arriving late into school. Any 6 incidents of lateness within a four week period could result in this outcome.

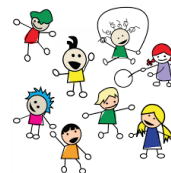
If you are experiencing any difficulties with your child's attendance, please contact the school for further guidance. Thank you

## STAR WORKER



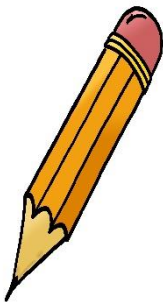
Bluebells – Elijah  
Daisies – Eldana  
1B – Rithwick  
1D – Joao  
2B – David  
2D – Daria  
3B – Valentina  
3D – Evelyn  
4B – Azenath  
4D – Mitsui  
5B – Aashi  
5D – Owen  
6B – Ravin  
6D – Oliver O

## TEAM PLAYER



Bluebells – David  
Daisies – Eva  
1B – Isabelle  
1D – Eleanor  
2B – Tomike  
2D – Kamil  
3B – Mcirvine  
3D – Carly  
4B – Gabriela  
4D – Arthur  
5B – Mia  
5D – Zak  
6B – Maryam  
6D – Merleah and Zofia

## STAR HANDWRITER



Bluebells – Honey  
Daisies – Pablo  
1B – Alexander  
1D – Oscar D  
2B – Meg  
2D – Olivia  
3B – Raynell  
3D – Lily  
4B – Luca  
4D – Elisabeta  
5B – Yanis  
5D – Reuben  
6B – Christopher  
6D – Janelle

## Attendance this Week

Bluebells	96%
Daisies	98%
1B	91%
1D	99%
2B	98%
2D	96%
3B	99%
3D	99%
4B	98%
4D	98%
5B	94%
5D	99%
6B	100%
6D	96%

**Congratulations to 6B who achieved the highest attendance this week. (100%)**

## CHILDLINE - WHO WE ARE!

Childline is here to help anyone under 19 in the UK with any issue they're going through.

You can talk about anything. Whether it's something big or small, our trained counsellors are here to support you. Childline is free, confidential and available any time, day or night. You can talk to us:

- by calling [0800 1111](tel:0800 1111)
- by [email](#)
- through [1-2-1 counsellor chat](#)

Whatever feels best for you.

<https://www.nspcc.org.uk/keeping-children-safe/our-services/childline/>

## E-Safety Updates

Please use the following links to keep up to date with online safety and what you can do to keep your children safe online.

[E-Safety: Help & Advice](#)

[Social Media & Mental Health; the positive and negative impact](#)

[Screen Addiction: A Parents Guide](#)

[A Parents Guide to Call of Duty \(COD\)](#)

[FIFA](#)

[FORTNITE](#)

Please click link below for tips, advice, guides and resources to help keep your child safe online

<https://www.saferinternet.org.uk/advice-centre/parents-and-carers>

**October Camp 2023** Non Stop Action are looking forward to **October Camp 2023!** We are running **Multi Sports** at Moss Hall Junior School (N3 1NR) and **Football** and **Dance** at Millbrook park school (NW7 1JF)! We will be running for 1 week, from **Monday 23rd October - Friday 27th October**. Bookings made before **Saturday 7th October** will automatically get our Early Bird discounts, and you can also save money by booking week blocks - book from as little as **£27.50** for a day, or **£109** for a week!

Head to our website to book now: <https://www.nonstopaction.co.uk/>

**Cameron Smith** Holiday Camp Manager



# Diary Dates

## OCTOBER

2nd SPEC Parents meeting	3.30pm
4 <sup>th</sup> Reception Meet the teacher	2.45pm
6 <sup>th</sup> School Photos	All Day
3rd Flu Nasal Spray Yr1-6	
11 <sup>th</sup> Black History Workshop/Day	ALL DAY
16 <sup>th</sup> 4B Collective Worship	2.45pm
18 <sup>th</sup> Parent Consultation Meeting	3.30-6.30pm
19 <sup>th</sup> Parent Consultation Meeting	5.00-8.00pm
19 <sup>th</sup> 4D Collective Worship	2.45pm
20 <sup>th</sup> Grandparents Afternoon Tea	1:45pm
30 <sup>th</sup> INSET DAY	ALL DAY
23rd-27 <sup>th</sup>	HALF TERM



## NOVEMBER

1st All Saints	
1st Prospective Nursery and Rec meeting	5.30pm
2nd Prospective Nursery and Rec meeting	9.05am
2 <sup>nd</sup> 3B Collective Worship	2.45pm
3rd Year 6 SATS Meeting	3.30pm
9 <sup>th</sup> 3D Collective Worship	2.45pm
10 <sup>th</sup> 2D Collective Worship	2.45pm
14 <sup>th</sup> SEND coffee morning (parents)	9.30am
15 <sup>th</sup> Diwali Workshop	ALL DAY
20 <sup>th</sup> Anti-Bullying workshop	ALL DAY
27 <sup>th</sup> 1D Collective Worship	2.45pm
28 <sup>th</sup> 1B Collective Worship	2.45pm
30 <sup>th</sup> 5B Collective Worship	2.45pm

## DECEMBER

1st Advent Reconciliation Service	9.15am
1 <sup>st</sup> 6B Collective Worship	2.45pm
4 <sup>th</sup> KS2 PANTO	
5 <sup>th</sup> KS1 PANTO	
7 <sup>th</sup> Christmas jumper day	ALL DAY
7 <sup>th</sup> 5D Collective Worship	2.45pm
8 <sup>th</sup> 6D Collective Worship	2.45pm
12 <sup>th</sup> Reception Nativity	9.30am
12 <sup>th</sup> KS1 Nativity 1st Performance	2.00pm
13 <sup>th</sup> KS1 Nativity 2nd Performance	2.00pm
18 <sup>th</sup> Nursery Nativity	9.30am
19 <sup>th</sup> KS2 Carol Service years 3-4	7.00pm
20 <sup>th</sup> KS2 Carol Service years 5-6	7.00pm
20 <sup>th</sup> School Christmas Lunch	
21 <sup>st</sup> End of Term	1.30pm

## JANUARY

8 <sup>th</sup> Back to school	8.40am
--------------------------------	--------

## FEBRUARY

7 <sup>th</sup> Parent Consultation Evening	3.30pm – 6.30pm
8 <sup>th</sup> Parent Consultation Evening	5.00pm – 8.00pm



## Parking near the school site and considerate road use



*You will be aware that the traffic and pedestrian congestion immediately outside the school at the beginning and end of the day is compromising the safety of all. We are working closely with the local authority for a long term solution.*

In the meantime, you can help us ensure children have a happy and safe journey to and from school by considering the following:

- **Walking wherever possible**

Not only is this a healthy way to get some exercise, but it supports the local community with congestion. In addition, it is much better for the environment.

- **Parking responsibly**

As with the majority of primary schools in the country, we do not have a 'parent' car park. If you do need to drive to drop off or collect your child please park at the **RAF museum** and walk down Great Strand. **Please be respectful of our neighbours and remember that parking on zig-zag lines at any time of the day is prohibited.**

- **Patience and Respect**

Please be considerate and respectful. Inevitably, slow moving traffic and congestion can cause frustration leading to impatience and irritability. Please be mindful that everyone is feeling the same however we must put the safety of all our pupils and families first and remain calm.

**We appreciate your support in this matter.**

**Please note the RAF Museum is providing 45 minutes free parking for all our parents/carers to ease the congestion on Great Strand.**

**Please make the most of this facility.**



# BLESSED DOMINIC CATHOLIC PRIMARY IS COLLECTING FOR HARVEST FESTIVAL



FOOD BANK AID

## FOOD BANKS URGENTLY NEED DONATIONS

Food Bank Aid delivers your donations to 30 food banks each week, supporting 16,000+ people (including 5,200 children) across North London.

## WHAT THE FOOD BANKS REALLY NEED



Tinned food - meat, fish, fruit, veg



Jam, honey and peanut butter



Breakfast cereals and porridge



Biscuits, crackers, cereal bars & dried fruit



Rice, grains & noodles



Laundry tablets and washing up liquid



Instant coffee and tea



Baby formula & nappies (large sizes), creams

## HOW TO DONATE FOR FOOD BANK AID

Please bring your donations to school from **16th - 20th October**. Thank you!



Food Bank Aid: North London



@foodbankaid\_nl

Food Bank Aid is a registered charity no. 1194314

## DROP OFF POINT



FOOD BANK AID

Thank you for your donation!