



Blessed Dominic Catholic Primary School Great Strand Colindale London NW9 5PE
Tel: 020 8205 3790

E-mail office@blesseddominic.barnetmail.net

Website www.blesseddominicprimary.co.uk

Friday 20th October 2023

Dear Parent/Carer,

Congratulations and well done to all the children and staff who contributed to success of our grandparents afternoon tea. Thank you to all those who baked, entertained and to the Year 6 children who diligently served refreshments throughout. A special thank you to Miss Sulis who organised the event. All the children behaved beautifully and with reverence. This event is an opportunity for the children to acknowledge the important role that their grandparents play in their lives and say thank you. Next week is half term and I would like to remind you that Monday 30th October 2023 is a staff training day so all children will return to school on Tuesday 31st October at the usual time.

On behalf of the school, I would like to wish you all a happy and restful half term break.

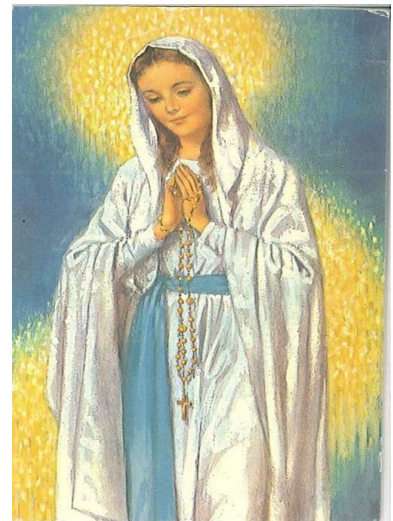
Best Wishes

Mrs Pears

October the Month of the Rosary

Hail, Mary, full of grace,
the Lord is with thee.
Blessed art thou amongst women
and blessed is the fruit of thy womb, Jesus.

Holy Mary, Mother of God,
pray for us sinners,
now and at the hour of our death.
Amen.



Prospective Nursery /Reception Meeting



For September 2024
Wednesday 1st November at 5.30pm
or
Thursday 2nd November at 9.05am





HARVEST APPEAL 2023



Thank you very much for your generous food donations.

Donations will go to help 'Food Bank Aid', based in North London, who are experiencing higher than usual demand. Your generosity and kindness will make a significant difference to the lives of many families.

GOVERNORS' FUND WE NEED YOUR HELP!



Thank you to everyone who has responded this term with either a termly or complete payment for the year. The Governors would like to thank you for your generosity and support. Only 10% of parents have donated so far this term please if you haven't done so already, make your payment on 'Parent Pay'

Your ongoing generosity and support is greatly appreciated. It means that we can continue to purchase high quality resources to support your child's learning and prepare them for the future.



Following school uniform policy



A reminder that coats, scarves, hats, gloves etc must be in line with the school uniform policy. Coats and all accessories must be blue/navy, black or grey. No other colour is permitted. Thank you for your support.

School Uniform is available to order and buy through our 'Parent Pay' shop

See link below

<https://app.parentpay.com/ParentPayShop/Uniform/Default.aspx?shopid=1131>



Lunches and snacks



Early Years Foundation stage and KS1 all receive a piece of fruit/vegetable as part of the government healthy eating scheme. This does not extend to KS2. Children may bring in their own fruit or vegetable for break, which should be kept separate from packed lunches. Biscuits, cakes, rice cakes are not acceptable. **Please keep packed lunches healthy.** They should not contain sweets or chocolate (A mars bar is chocolate, a Kit-Kat is a chocolate covered biscuit) and must not contain nuts of any kind as we have children with severe allergies. Please be careful with things like chocolate spreads and satay coverings, which don't look like nuts. Plenty of ideas can be found at <https://www.nhs.uk/change4life/recipes/healthierlunchboxes>

Criteria for Attendance and Punctuality – Updates from our Education Welfare Officer (EWO).

In an effort to improve attendance and punctuality across the school, we will be implementing the fixed penalty notice scheme for both persistent ABSENCE and persistent lateness.



Recently, our Barnet Education Welfare Officer came to review our attendance. She was disappointed to see that attendance wasn't as high as it used to be pre-covid times.

There are quite a few children who have attendance below **90%**. *This figure is significantly below the national average and is considered as persistent non-attendance.* **96%** attendance is expected by the school and the Education Welfare Team for children to achieve their educational potential. Children who are unwell (e.g., sickness, vomiting or high temperature) should not come to school but children who are slightly under the weather should attend. Please be assured, that if we feel your child is ill, we will send them home.

When your child is absent for **more than three days**, we would expect all parents to substantiate with **medical evidence**. This could include:

- a stamped doctor's appointment card,
- information about the medication your child has been prescribed (a photo can be emailed to the office or brought in on return to school).

As you know, we can administer medication on site (if it is prescribed by the doctor).

The Education Welfare Team from the London Borough of Barnet regularly monitor our attendance. They may contact you if your child's attendance is significantly low (below 90%). This may be a letter or a phone call. Absences before and after school holidays will also be monitored. If there is not a sufficient reason to substantiate the absence, the Education Welfare Team will issue a fixed penalty notice.

Families should also be aware that the London Borough of Barnet will issue a fixed penalty notice to parents if children are consistently arriving late into school. Any 6 incidents of lateness within a four week period could result in this outcome.

If you are experiencing any difficulties with your child's attendance, please contact the school for further guidance.

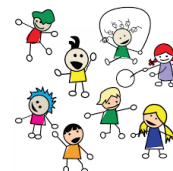
I would like to thank you for your continued support with regards to attendance.

STAR WORKER



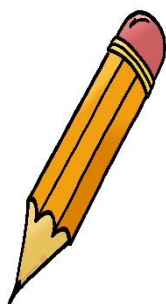
Bluebells –Eli
 Daisies –Serioga
 1B – Aliza
 1D – Raquel
 2B – Caroline
 2D – Callum and Alexander
 3B – Isabella
 3D –Edward
 4B – Joshua
 4D –Gabriel
 5B – Umair
 5D – Kemiye
 6B – Trisha
 6D –Whole Class

TEAM PLAYER



Bluebells –Jacob
 Daisies –Daiana
 1B –Alicja
 1D – Matei
 2B – Helena
 2D - Yuri
 3B – Benjamin
 3D – Elsa
 4B – Martin
 4D – Jesse
 5B –Joshua
 5D –Jasmine
 6B – Mya
 6D – Janelle

STAR HANDWRITER



Bluebells – Honey
 Daisies - Jimmy
 1B –Sadat
 1D – Jill
 2B – Mirabel
 2D - Manasseh
 3B – Oliver
 3D – Joel
 4B – Hannah
 4D –Hanna
 5B - Michael
 5D –Zara
 6B – Ola
 6D-Alexandra

Attendance this Week

Bluebells	90%
Daisies	89%
1B	94%
1D	98%
2B	93%
2D	91%
3B	97%
3D	99%
4B	99%
4D	98%
5B	99%
5D	94%
6B	99%
6D	98%

Congratulations to 3D, 4B, 5B & 6B who achieved the highest attendance this week.

October Camp 2023 Non Stop Action are looking forward to **October Camp 2023!** We are running **Multi Sports** at Moss Hall Junior School (N3 1NR) and **Football** and **Dance** at Millbrook park school (NW7 1JF)! We will be running for 1 week, from **Monday 23rd October - Friday 27th October**. Bookings made before **Saturday 7th October** will automatically get our Early Bird discounts, and you can also save money by booking week blocks - book from as little as **£27.50** for a day, or **£109** for a week!

Head to our website to book now: <https://www.nonstopaction.co.uk/>

Cameron Smith Holiday Camp Manager



CHILDLINE - WHO WE ARE!

Childline is here to help anyone under 19 in the UK with any issue they're going through.

You can talk about anything. Whether it's something big or small, our trained counsellors are here to support you.

Childline is free, confidential and available any time, day or night. You can talk to us:

- by calling [0800 1111](tel:08001111)
- by [email](#)
- through [1-2-1 counsellor chat](#)

Whatever feels best for you.

<https://www.nspcc.org.uk/keeping-children-safe/our-services/childline/>

E-Safety Updates

Please use the following links to keep up to date with online safety and what you can do to keep your children safe online.

[E-Safety: Help & Advice](#)

[Social Media & Mental Health; the positive and negative impact](#)

[Screen Addiction: A Parents Guide](#)

[A Parents Guide to Call of Duty \(COD\)](#)

[FIFA](#)

[FORTNITE](#)

Please click link below for tips, advice, guides and resources to help keep your child safe online

<https://www.saferinternet.org.uk/advice->

Diary Dates

OCTOBER

Monday 23rd- Friday 27th - HALF TERM

Monday 30th October – school closed for staff training

Tuesday 31st October – school reopens for pupils



NOVEMBER

1st All Saints

1st Prospective Nursery and Rec meeting 5.30pm

2nd Prospective Nursery and Rec meeting 9.05am

2nd 3B Collective Worship 2.45pm

3rd Year 6 SATS Meeting 3.30pm

9th 3D Collective Worship 2.45pm

10th 2D Collective Worship 2.45pm

14th SEND coffee morning (parents) 9.30am

15th Diwali Workshop ALL DAY

16th 4D Collective Worship 2.45pm

20th Anti-Bullying workshop ALL DAY

27th 1D Collective Worship 2.45pm

28th 1B Collective Worship 2.45pm

30th 5B Collective Worship 2.45pm

DECEMBER

1st Advent Reconciliation Service 9.15am

1st 6B Collective Worship 2.45pm

4th KS2 PANTO

5th KS1 PANTO

7th Christmas jumper day ALL DAY

7th 5D Collective Worship 2.45pm

8th 6D Collective Worship 2.45pm

12th Reception Nativity 9.30am

12th KS1 Nativity 1st Performance 2.00pm

13th KS1 Nativity 2nd Performance 2.00pm

14th School Christmas Lunch

18th Nursery Nativity 9.30am

19th KS2 Carol Service years 3-4 7.00pm

20th KS2 Carol Service years 5-6 7.00pm

21st End of Term 1.30pm

JANUARY

8th Back to school 8.40am

FEBRUARY

7th Parent Consultation Evening 3.30pm – 6.30pm

8th Parent Consultation Evening 5.00pm – 8.00pm

12th – 16th – FEBRUARY HALF TERM

14th Ash Wednesday (Half term)

29th Feb World Book Day

Parking near the school site and considerate road use



You will be aware that the traffic and pedestrian congestion immediately outside the school at the beginning and end of the day is compromising the safety of all. We are working closely with the local authority for a long term solution.

In the meantime, you can help us ensure children have a happy and safe journey to and from school by considering the following:

- **Walking wherever possible**

Not only is this a healthy way to get some exercise, but it supports the local community with congestion. In addition, it is much better for the environment.

- **Parking responsibly**

As with the majority of primary schools in the country, we do not have a 'parent' car park. If you do need to drive to drop off or collect your child please park at the **RAF museum** and walk down Great Strand. **Please be respectful of our neighbours and remember that parking on zig-zag lines at any time of the day is prohibited.**

- **Patience and Respect**

Please be considerate and respectful. Inevitably, slow moving traffic and congestion can cause frustration leading to impatience and irritability. Please be mindful that everyone is feeling the same however we must put the safety of all our pupils and families first and remain calm.

We appreciate your support in this matter.

Please note the RAF Museum is providing 45 minutes free parking for all our parents/carers to ease the congestion on Great Strand.

Please make the most of this facility.



JUST ONE Tree Day - we must protect our planet!

